

Capsugel®

**Lonza**

Pharma & Biotech



# Good as gold.

**Capsugel®**

**Vcaps® Plus capsules**

*The gold standard in HPMC capsules*

*Comparative human in-vivo  
study of an immediate release  
tablet over-encapsulated by  
gelatin and hydroxypropyl  
methyl cellulose capsules –  
impact of dissolution rate on  
bioequivalence*

**Made better. By Science™**

Want to know more?  
Visit [www.capsugel.com](http://www.capsugel.com)

# Comparative human *in-vivo* study of an immediate release tablet over-encapsulated by gelatin and hydroxypropyl methyl cellulose capsules – impact of dissolution rate on bioequivalence

Sven Stegemann<sup>1</sup>, Sudershan Vishwanath<sup>2</sup>, Ravi Kumar<sup>2</sup>, Dominique Cade<sup>3</sup>, Missy Lowery<sup>4</sup>, Keith Hutchison<sup>1</sup>, Michael Morgen<sup>5</sup>, Aaron Goodwin<sup>5</sup> and Chang Lee<sup>6</sup>

## Introduction

Rapid and consistent *in-vivo* drug dissolution is critical for drug absorption. *In-vitro* dissolutions tests are used to predict *in-vivo* disintegration and dissolution properties of drug products. The *in-vitro* disintegration and dissolution times of tablets and capsules can vary significantly based on their composition and processing. Though small differences *in-vitro* dissolution are not expected to result in significant *in-vivo* performance differences, the slight *in-vitro* dissolution delay observed by over-encapsulation for double blind clinical trials, as well as switching from gelatin to HPMC capsules often raises concerns on the potential impact on *in-vivo* bioavailability. While it is accepted that the *in-vitro* dissolution delay of about 5 minutes caused by over-encapsulation with gelatin capsules of immediate release (IR) tablets or powder formulation does not lead to non-bioequivalence, no data on bioequivalence exist for over-encapsulation with an HPMC capsule having a dissolution lag time of around 10

minutes. To assess the potential impact, a comparative investigation was performed using *in-vitro* dissolution, PK simulation and human bioequivalence comparing an IR fixed dose combination compressed caplet containing three different rapidly-absorbed drugs over-encapsulated with gelatin capsules and the same caplet over-encapsulated with HPMC capsules made by a thermo-gelation process.

Two piece hard gelatin capsules (HGC) have been used to deliver medicines and nutritional supplements for over 80 years [Colton, 1931]. These types of HGCs are well-described in pharmacopoeial monographs and in the literature and their *in-vitro* and *in-vivo* behavior has been extensively characterized. Due to their reliable IR performance, HGCs are widely used for a variety of formulations and delivery applications [Stegemann 2011, Cole et al., 2008, Deepthi & Murthy, 2015].

<sup>1</sup> Lonza, Rijksweg 11, 2880 Bornem, Belgium <sup>2</sup> Vimta Labs, 142, IDA, Phase 2, Cherlapally, Hyderabad-500 051, India <sup>3</sup> Lonza, 10 Rue Timken, 68000 Colmar, France <sup>4</sup> Lonza, 535 Emerald Road N, Greenwood, SC 29646 USA <sup>5</sup> Bend Research, 64550 Research Road, Bend, OR 97701 USA <sup>6</sup> Lonza, 412 Mt. Kemble Avenue, Suite 200 S, Morristown, NJ 07960 USA

**The bioequivalence study was a single-center, open label, single dose, randomized 2-way crossover in 24 male healthy subjects aged 18-45 years under overnight fasted conditions.**

The plant-derived polymer hydroxypropyl methyl cellulose (HPMC) has been used in pharmaceutical and nutritional products for many years as an excipient for drug product formulation and coating applications. HPMC capsules are an alternative to HGCs, and were originally manufactured by addition of a gelling system using a gelling agent (e.g. carrageenan, gellan gum) and gelling promoter (e.g. potassium acetate, potassium chloride) to form the capsule shell. HPMC capsules produced by newly-developed thermo-gelation processes without the addition of gelling systems were introduced later and have been commercially available for some time [Al-Tabakha, 2015, Cade & He 2010]. The physical and chemical properties of HPMC address some limitations of gelatin, enabling the application of capsule technology to a broader range of drug products and formulations. Specifically, HPMC allows incorporation into capsules ingredients that are chemically incompatible with gelatin, hygroscopic or sensitive to moisture. Studies have demonstrated differing *in-vitro* dissolution profiles for HGCS and different types of HPMC capsules [Gabacza et al., 2014, Honkanen et al., 2001; Vardakou et al., 2011]. The dissolution profiles of HPMC capsules depend on the capsule formulation and manufacturing process. HPMC capsules using either carrageenan or gellan gum as a gelling agent show a pH and ionic strength dependent dissolution behavior which was not the case for HPMC capsules made by a thermo-gelation process [Ku et al., 2011]. It has been shown that the bioavailability is comparable between gelatin, HPMC capsules containing gelling agents and HPMC capsules made by thermo-gelation for IR products [Ku et al., 2010; Cole et al., 2004].

**Study Design**

Two dosage forms were prepared: 1) Excedrin® Extra Strength (Novartis Consumer Health) caplets each containing Acetaminophen/Acetylsalicylic acid/Caffeine 250/250/65 mg were over-encapsulated in a standard size 00 hard gelatin capsule (Capsugel, France) and 2) the same Excedrin caplets were over-encapsulated in HPMC capsules manufactured by a thermo-gelation process without secondary gelling agents (Vcaps® Plus, Capsugel, France). The *in-vitro* dissolution of the over-encapsulated caplets were performed according to the USP 29 monograph for “acetaminophen, aspirin and caffeine tablets” using a USP dissolution apparatus 2 at 100 rpm and 900 ml water at 37° C ± 0.5° C. Samples were taken after 10, 20, 30, 45 and 60 minutes, and analyzed by HPLC for acetaminophen, acetylsalicylic acid and caffeine. PK simulations of all three compounds were performed using GastroPlus software version 9.0. We report here only the results for acetaminophen as its predicted PK was the most sensitive to the input release profile. Clearance, volume of distribution, and number of compartments were fit to the measured mean plasma concentration versus time data for the two over-encapsulated dosage forms, and the physicochemical properties of acetaminophen were calculated using Simulations Plus ADMET predictor version 7.1. Dissolution kinetics were fit to *in-vitro* dissolution data using a Weibull model equation:

$$R = R_{max} \left( 1 - e^{-\frac{(t-T)^b}{A}} \right)$$

**Table 1. Physical characteristics of the 24 males enrolled in the *in-vivo* bioequivalence study**

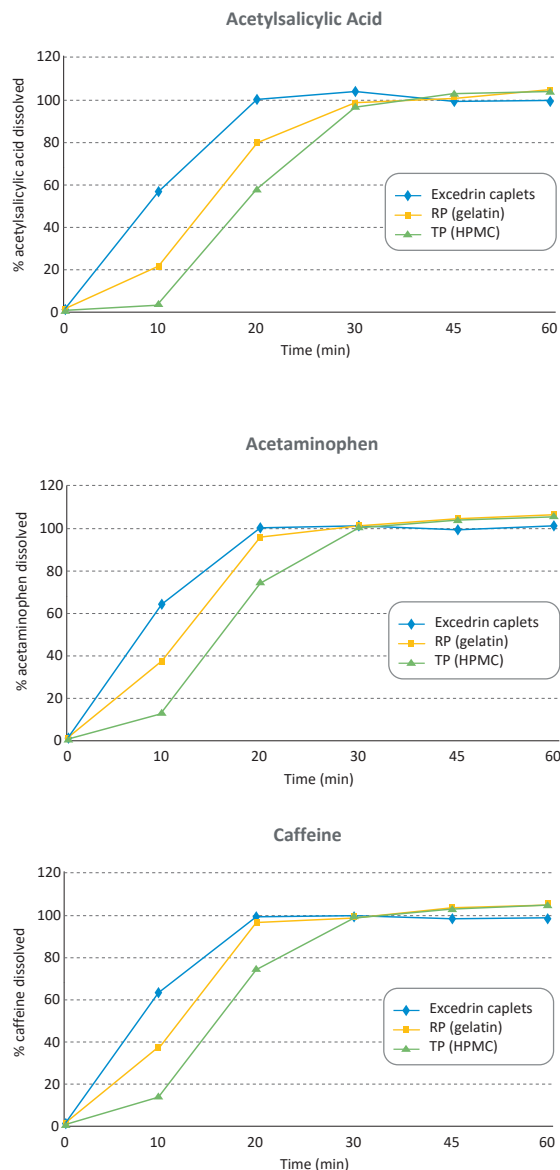
	Age (years)	Weight (kg)	Height (cms)	BMI (kg/m²)
Mean (Standard Deviations)	29.9 (6.8)	63.4 (7.3)	167.6 (5.6)	22.6 (2.2)
Median	30	62.9	168	23.2
CV%	22.7	11.5	3.3	9.8
Range	18-43	50-77	153-176	18.5-24.9

where  $R$  is the percent of drug released,  $R_{max}$  is the maximum percentage of drug released,  $t$  is the time in hours,  $T$  is the lag time,  $b$  is a shape factor, and  $A$  is a kinetic or time scale parameter.

The bioequivalence study was a single-center, open label, single dose, randomized 2-way crossover in 24 male healthy subjects aged 18-45 years under overnight fasted conditions characterized in *Table 1*.

Plasma samples for the determination of acetaminophen, acetylsalicylic acid, total salicylate, and caffeine, were collected before receiving the over-encapsulated caplets in either gelatin or HPMC capsules with 240 mL water and 20 and 40 minutes and 1, 1.5, 2, 3, 4, 6, 8, 10, and 12 hours post dose.

Plasma  $C_{max}$ ,  $AUC_{0-t}$  and  $AUC_{0-\infty}$  of acetaminophen, acetylsalicylic acid, total salicylates and caffeine were considered as the primary pharmacokinetic parameters to establish bioequivalence between the two over-encapsulated products. According to the regulatory requirement for bioequivalence, an acceptance range of 80.00 to 125.00% was defined.



**Figure 1.** *In-vitro* dissolution profiles of acetaminophen (a), acetylsalicylic acid (b) and caffeine (c) from two Excedrin® Extra Strength caplets, RP (over-encapsulated in gelatin capsules) or TP (over-encapsulated in HPMC capsules) in USP apparatus 2 in water 37° C ± 0.5° C at 100 rpm.

## Results

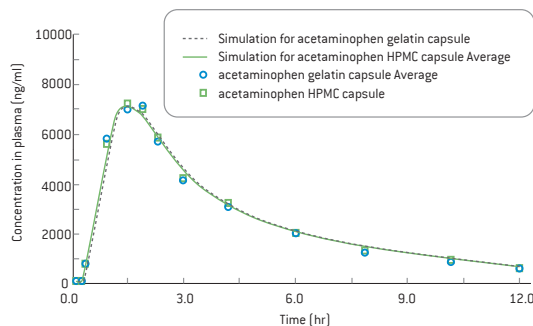
### IN-VITRO DISSOLUTIONS

The dissolution data for Excedrin® Extra Strength caplets and the two types of over-encapsulated caplets in gelatin and HPMC capsules are provided in *Figure 1*.

The results show that the APIs had slower release from the over-encapsulated product than from the unencapsulated caplets. Release from the HGC over-encapsulated dosage form was delayed by about 5 minutes and release from the HPMC over-encapsulated dosage form was delayed by about 10 minutes relative to that of the unencapsulated caplet. After 30 minutes, 95% of acetylsalicylic acid, acetaminophen and caffeine were released for all 3 dosage forms.

### PK SIMULATIONS

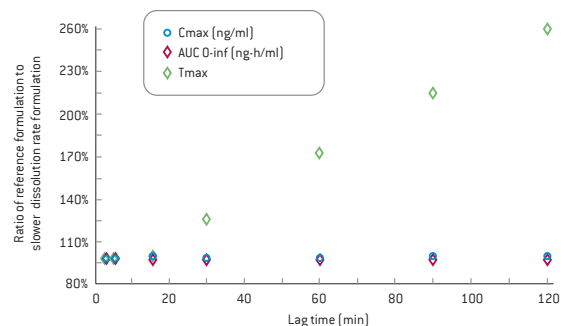
PK simulations were used to predict the impact of the slightly delayed release of active caused by over-encapsulation with the two types of capsules on the average plasma concentrations of each active. The *in-vitro* dissolution profiles shown in *Figure 1* were fit to a Weibull equation. The dissolution lag time, which is representative of the capsule rupture time, was varied in the simulations. Results are shown only for acetaminophen as its predicted PK profile is most sensitive to the input release rate due to its fast absorption and clearance. Simulation results are



**Figure 2.** *In-vivo* and simulation concentration versus time comparisons for acetaminophen in HPMC and gelatin capsules.

overlaid with average measured plasma concentrations and presented in *Figure 2*. The simulations predicted nearly identical plasma concentration versus time profiles for the two over-encapsulated dosage forms, resulting in no significant difference in  $C_{max}$ ,  $T_{max}$  or AUC.

*Figure 3* shows the predicted sensitivity of three PK parameters,  $C_{max}$ ,  $T_{max}$  and AUC, on the input dissolution lag time. These simulations compared the predicted PK profiles to the PK profile of the reference acetaminophen formulation. These simulations predict, as expected, that  $T_{max}$  increases linearly with increasing dissolution lag time but almost no difference in  $C_{max}$  and AUC for lag times up to 120 minutes. Thus, it is expected that small differences in dissolution time lag of the magnitude measured for over-encapsulation – on the order of only 5 to 10 minutes – should have negligible impact on PK.



**Figure 3.** PK simulation results for acetaminophen with increasing dissolution rate lag time.

## IN-VIVO PHARMACOKINETIC DATA AND BIOEQUIVALENCE ANALYSIS

$C_{max}$ ,  $AUC_{0-t}$  and  $AUC_{0-\infty}$  for acetaminophen, acetylsalicylic acid, total salicylates and caffeine of the over-encapsulated caplets in HGC and HPMC capsules are shown in Figures 4a-d and Table 2. The rate and extent of absorption of all three model drugs dosed as the two different dosage forms is essentially identical, with no statistical difference for all of the pharmacokinetic parameters investigated.

Statistical analysis confirmed that the 90% CI for  $C_{max}$ ,  $AUC_{0-t}$  and  $AUC_{0-\infty}$  are well within the range of 80-125.00% acetaminophen, aspirin (acetylsalicylic acid, total salicylates) and caffeine for comparison of the gelatin over-encapsulated caplet and the HPMC capsule over-encapsulated caplet (Tables 3a-d).

Further analysis from the mixed model analysis (Table 4), demonstrated that there were no sequence effects on  $C_{max}$  and AUC of acetaminophen, aspirin (acetylsalicylic acid, total salicylates) and caffeine, as no statistical difference was found at the 10% level of significance. This data suggests that drug release and absorption from HGC and HPMC capsules for the three model compounds are comparable and meet the PK criteria for bioequivalence.

**Table 2.** Mean pharmacokinetic parameters including standard deviations of acetaminophen, acetylsalicylic acid, total salicylate and caffeine (N=24) released from gelatin and HPMC capsules. The 90% CI for  $C_{max}$ ,  $AUC_{0-t}$  and  $AUC_{0-\infty}$  were within 80.00-125.00% range.

PK Parameter (Units)	Acetaminophen		Acetylsalicylic Acid		Total Salicylates		Caffeine	
	Gelatin capsule	HPMC capsule	Gelatin capsule	HPMC capsule	Gelatin capsule	HPMC capsule	Gelatin capsule	HPMC capsule
$C_{max}$ ( $\mu\text{g/mL}$ )	8.7 [2.2]	8.5 [2.1]	5.3 [2.2]	5.5 [2.1]	37.7 [6.2]	36.6 [6.5]	4.1 [0.7]	4.1 [0.7]
$AUC_{0-t}$ ( $\mu\text{g.hr/mL}$ )	30.0 [7.6]	30.6 [9.1]	5.2 [1.1]	5.2 [1.1]	219.41 [50.3]	216.2 [50.2]	27.6 [6.5]	29.0 [7.9]
$AUC_{0-\infty}$ ( $\mu\text{g.hr/mL}$ )	32.2 [8.6]	32.9 [10.4]	5.4 [1.2]	5.4 [1.1]	245.4 [73.8]	240.8 [72.0]	44.0 [17.1]	46.0 [19.7]
* $T_{max}$ (hr)	1.0 [0.7, 1.5]	1.0 [0.7, 2.0]	1.0 [0.7, 1.5]	1.0 [0.7, 2.0]	2.0 [1.0, 2.0]	2.0 [1.0, 4.0]	1.0 [0.7, 3.0]	1.0 [0.7, 3.0]
$T_{1/2}$ (hr)	2.9 [0.4]	3.0 [0.5]	0.4 [0.2]	0.4 [0.1]	3.0 [0.9]	2.9 [0.9]	7.4 [2.7]	7.2 [2.8]
Kel (1/hr)	0.2 [0.03]	0.2 [0.03]	1.8 [0.4]	1.7 [0.3]	0.2 [0.1]	0.2 [0.1]	0.1 [0.04]	0.1 [0.05]
AUC_Ratio	93.4 [2.1]	93.4 [2.2]	98.1 [4.1]	98.2 [2.0]	91.0 [5.8]	91.3 [5.8]	67.0 [12.7]	67.6 [12.6]

\*For  $T_{max}$ , Median minimum and maximum values are presented.

**Table 3a.** Statistical analysis results for the assessment of bioequivalence of acetaminophen (N=24).

PK Parameter	Least Squares Geometric Means of Treatment:		Ratio (%)	Intrasubject %CV	90% CI of Ratio
	Gelatin capsules	HPMC capsules			
$\log\{C_{max}\}$	8.5	8.1	103.9	21.8	[93.4, 115.6]
$\log\{AUC_{0-t}\}$	29.1	29.3	99.0	7.9	[95.3, 102.9]
$\log\{AUC_{0-\infty}\}$	31.1	31.4	99.0	7.9	[95.2, 102.9]

**Table 3b.** Statistical analysis results for the assessment of bioequivalence of acetylsalicylic acid (N=24).

PK Parameter	Least Squares Geometric Means of Treatment:Ratio (%)			Intrasubject %CV	90% CI of Ratio
	Gelatin capsules	HPMC capsules			
log[C <sub>max</sub> ]	4.9	5.0	97.8	41.4	[80.4, 119.2]
log[AUC <sub>0-t</sub> ]	5.1	5.1	100.6	13.3	[94.2, 107.4]
log[AUC <sub>0-∞</sub> ]	5.3	5.3	99.5	13.5	[92.0, 107.6]

**Table 3c.** Statistical analysis results for the assessment of bioequivalence of total salicylates (N=24).

PK Parameter	Least Squares Geometric Means of Treatment: Ratio (%)			Intrasubject %CV	90% CI of Ratio
	Gelatin capsules	HPMC capsules			
log[C <sub>max</sub> ]	37.2	35.9	103.4	9.4	[98.7, 108.4]
log[AUC <sub>0-t</sub> ]	214.1	210.6	101.7	6.3	[98.5, 104.9]
log[AUC <sub>0-∞</sub> ]	235.9	231.2	102.0	6.9	[98.6, 105.5]

**Table 3d.** Statistical analysis results for the assessment of bioequivalence of caffeine (N=24).

PK Parameter	Least Squares Geometric Means of Treatment: Ratio (%)			Intrasubject %CV	90% CI of Ratio
	Gelatin capsules	HPMC capsules			
log[C <sub>max</sub> ]	4.1	4.1	99.9	14.5	[93.1, 107.4]
log[AUC <sub>0-t</sub> ]	26.8	27.9	96.2	8.9	[91.9, 100.5]
log[AUC <sub>0-∞</sub> ]	40.8	42.0	97.0	17.8	[88.9, 105.9]

**Table 4.** Statistical analysis results from mixed model analysis of acetaminophen, acetylsalicylic acid, total salicylates and caffeine (N=24).

PK Parameter	P-Value			Intra-subject CV (%)	% Post-hoc Power
	Sequence	Period	Treatment		
<b>Acetaminophen</b>					
log[C <sub>max</sub> ]	0.6	0.01	0.5	21.8	89.4
log[AUC <sub>0-t</sub> ]	0.4	0.03	0.7	7.8	100.0
log[AUC <sub>0-∞</sub> ]	0.4	0.02	0.7	7.8	100.0
<b>Acetylsalicylic Acid</b>					
log[C <sub>max</sub> ]	0.3	0.4	0.8	41.4	21.3
log[AUC <sub>0-t</sub> ]	0.6	0.9	0.9	13.3	100.0
log[AUC <sub>0-∞</sub> ]	0.9	0.9	0.9	13.5	99.99
<b>Total Salicylates</b>					
log[C <sub>max</sub> ]	0.7	0.6	0.2	9.4	100.0
log[AUC <sub>0-t</sub> ]	0.7	0.5	0.4	6.3	100.0
log[AUC <sub>0-∞</sub> ]	0.7	0.4	0.3	6.9	100.0
<b>Caffeine</b>					
log[C <sub>max</sub> ]	0.8	0.02	0.9	14.5	99.9
log[AUC <sub>0-t</sub> ]	0.9	0.2	0.1	8.9	100.0
log[AUC <sub>0-∞</sub> ]	0.8	0.4	0.5	17.8	98.0

## Discussion

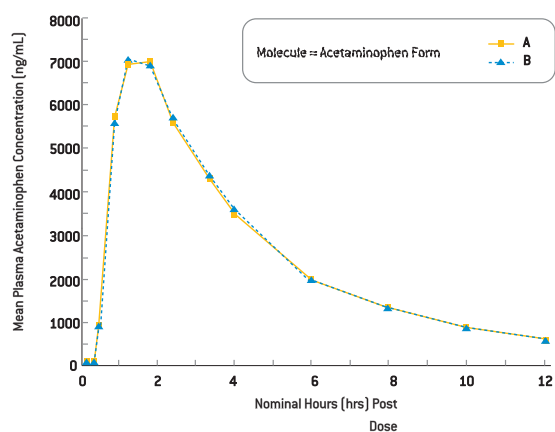
There are various types of commercial two-piece HPMC capsules having different formulations and manufacturing processes, providing distinct *in-vitro* and *in-vivo* characteristics. HPMC capsules manufactured by the traditional dipping process include a gelling system composed of gelling agent or polymer (carrageenan or gellan gum) and a gelling promoter (potassium chloride or potassium acetate) [Cole et al., 2004]. The dissolution performance of these HPMC capsules depends on the pH and ionic strength of the media [Cole et al., 2014; Honkanen et al., 2001; Ku et al., 2011]. The potential impact of these dissolution differences on the *in-vivo* performance in patient populations is still unclear. However, it has been suggested to avoid administration of drug products in such capsules with carbonated drinks [Chiwele et al., 2000].

In contrast, HPMC capsules manufactured from pure HPMC (no gelling agent added) using a

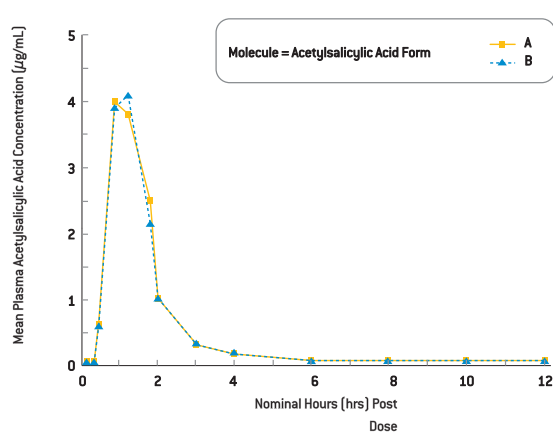
thermo-gelation process have dissolution profiles independent of pH and ionic strength of the dissolution media [Groshens et al., 2009; Kilic et al., 2009; He et al., 2012].

For double blind clinical trials, over-encapsulation of IR products with HGCs is used for blinding purposes. The short lag-time generated by the encapsulation of the tablets – on the order of 5 minutes – is seen in the *in-vitro* dissolution profiles of over-encapsulated tablets [Esseku et al., 2010]. *In-vivo* studies using gamma-scintigraphy to determine capsule initial and complete disintegration and bioequivalence and pharmacodynamic endpoints between an encapsulated and non-encapsulated IR tablets have shown that IR tablets can be used as sensitive markers for the evaluation of the impact of capsules on the *in-vivo* performance [Goates et al., 2000; Sikes et al., 2003; Wilding et al., 2005].

Acetaminophen, acetylsalicylic acid and caffeine have good aqueous solubility and high



**Figure 4a.** Mean *in-vivo* acetaminophen plasma concentration profiles over 12 hours.



**Figure 4b.** Mean *in-vivo* acetylsalicylic acid plasma concentration profiles over 12 hours.



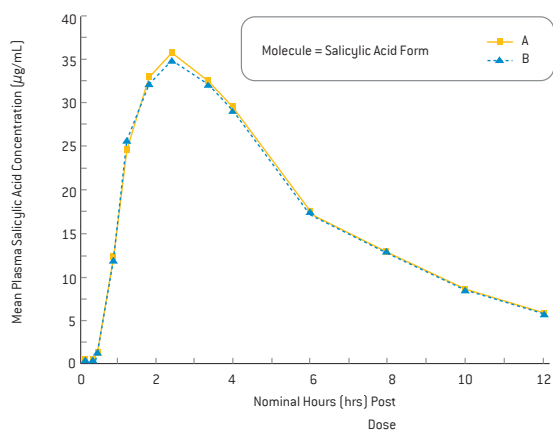
permeability and therefore are Class 1 drugs according to the BDDCS classification. [Benet et al., 2011]. The three compounds are known to have short  $T_{max}$  values between 0.5 and 2.0 h and the Excedrin® Extra Strength caplets releases more than 90% of the three actives within 5 minutes, and 100% within 15 minutes, according to the FDA product review [FDA 1998]. To evaluate the impact of the two different capsules on *in-vivo* performance, the Excedrin® Extra Strength caplets were selected for the study, as the release of the caplets from the capsule is the critical parameter for *in-vivo* dissolution and absorption of all three drugs.

The *in-vitro* dissolution profiles of acetaminophen, acetylsalicylic acid and caffeine were performed in purified water according to the FDA monograph for ‘acetaminophen, acetylsalicylic acid and caffeine’ fixed dose combination tablets [USP 29] and applied for the Excedrin® Extra Strength caplets filing in 1997 [FDA 1998]. The *in-vitro* dissolution profiles of the Excedrin® Extra Strength caplets in this study were slower than the data reported in the registration for the caplet version,

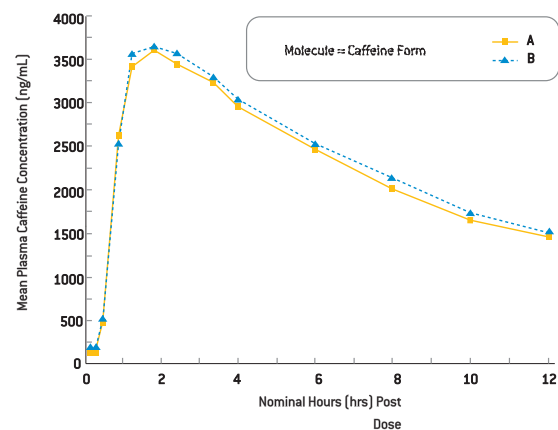
but comparable to the dissolution data reported for the Geltab version [FDA 1998].

The *in-vitro* dissolution of the three APIs demonstrated a delay in dissolution of about 5 minutes for the HGC over-encapsulated caplet and a delay of about 10 minutes for the HPMC capsule over-encapsulated caplet compared to the non-encapsulated caplet. However, greater than 95% of the active was released for all 3 dosage forms after 30 minutes, in agreement with the previously reported dissolution data, and attributable to the slightly longer rupture time for HGC (2-3 minutes) and HPMC capsules (8 minutes) [Ku et al., 2011].

The  $AUC_{0-t}$ ,  $AUC_{0-\infty}$ ,  $AUC_{0-t} / AUC_{0-\infty}$ ,  $C_{max}$  and  $T_{max}$  of acetaminophen, acetylsalicylic acid, total salicylate and caffeine in gelatin and HPMC capsules in the healthy volunteers were all comparable. The statistical analysis of the acetaminophen, acetylsalicylic acid, total salicylate and caffeine values, and mixed model analysis between these compounds did not reveal any significant difference between HGC



**Figure 4c.** Mean *in-vivo* total salicylates plasma concentration profiles over 12 hours.



**Figure 4d.** Mean *in-vivo* caffeine plasma concentration profiles over 12 hours.

over-encapsulated caplets and HPMC capsule over-encapsulated caplets using a 90% confidence interval of the ratio. The results met the criteria for bioequivalence between the reference product and test product.

These results were consistent with the acetaminophen PK simulations, shown in *Figure 2*. These simulations were used to assess the impact of dissolution profile on the predicted plasma concentration versus time profiles. The simulations predicted there should be no significant difference in AUC,  $C_{max}$ , or  $T_{max}$  due to the small difference in release and dissolution. A series of simulations was conducted using dissolution profiles with longer lag times. As shown in *Figure 3*, lag times as long as 120 minutes were predicted to have essentially no impact on AUC and  $C_{max}$ . This is expected as acetaminophen is highly permeable and its rate and extent of absorption is not expected to be sensitive to position in the small intestine. However, as expected,  $T_{max}$  was predicted to linearly increase with the dissolution lag time input for dissolution lag times longer than about 15 minutes, the average gastric emptying time for a human in the fasted state [Dressman et al., 1986]. Specifically, the simulation predicts that the release lag time – and presumably capsule rupture time – would have to be longer than 25 minutes before a 20% change in  $T_{max}$  would be expected to be observed.

The findings agree with recent clinical data showing that *in-vivo* in the fasted state, HPMC and gelatin capsule formulations of afuresertib are bioequivalent [Lickliter et al., 2014]. That study indicated that food can increase the *in-vivo* bioavailability of afuresertib in HPMC capsules and this is an area for future research, where dissolution testing could be used to explore the potential for achieving increased bioavailability.

For certain applications, one might expect differences in *in-vivo* performance between the same active and formulation dosed in HGC versus HPMC capsules. Examples include:

1. Applications where acid soluble drugs (e.g. weak bases) may show a difference in extent of absorption due to differences in gastric exposure due to differing capsule shell dissolution rates;
2. Applications where there is potential for API conversion to a low energy form during gastric exposure;
3. Formulations which may be particularly prone to gelation during capsule shell dissolution, which can result in slow API dissolution from the gel; and
4. Applications involving low solubility weakly basic APIs, where the HPMC from the capsule shell may act beneficially as a crystallization inhibitor. [Ouellet, et al., 2013].

## Conclusions

The comparative *in-vivo* study between

1. An IR compressed caplet over-encapsulated with a standard gelatin; and
2. The same IR compressed caplet over-encapsulated with an HPMC capsule manufactured by a thermo-gelation process (without the use of secondary gelling agents) has demonstrated equivalent performance for all three BDDCS Class 1 drugs contained in the caplet.

Bioequivalence was achieved for acetaminophen, acetylsalicylic acid, total salicylate and caffeine on the PK parameters of AUC,  $C_{max}$  and  $T_{max}$  in the plasma sampled from 24 fasted human subjects for the reference product (Excedrin® Extra Strength caplets over-encapsulated in gelatin capsules) and test product (Excedrin® Extra Strength caplets over-encapsulated in HPMC capsules made by a thermo-gelation process).

## References

- Al-Tabakha M.M., Arida A. L., Faehelebom K.M., Sadek, B., Saeed, D.A., Abu, Jarad, R.A., Jawadi, J. 2015. Influence of capsule shell composition on the performance indicators of hypromellose capsule in comparison to hard gelatin capsules. *Drug Dev. Ind. Pharm.* 14, 1-12.
- Benet, L.Z., Broccatelli, F., Oprea, T.I. (2011) BDDCS applied to over 900 drugs. *AAPS J* 13(4) 519-547
- Cade, D., He, X., 2010. Hydroxypropyl Methyl Cellulose Hard Capsules and Process of Manufacture US Patent 20100168410 A1.
- El-Malah, Y., Nazzal, S., Bottom, C.B. (2007) Hard gelatin and hypromellose (HPMC) capsules: estimation of rupture time by real-time dissolution spectroscopy. *Drug Dev. Ind. Pharm.* 33, 27–34.
- Esseku, F., Leshner, M., Bijlani, V., Lai, S., Cole, E., Adeyeye, M. (2010) The effect of over-encapsulation on disintegration and dissolution. *Pharm Technol* 104-111.
- Cole, E.T., Scott, R.A., Connor, A.L., Wilding, I.R., Petereit, H.U., Schminke, C., Beckert, T., Cadé, D. 2002. Enteric coated HPMC capsules designed to achieve intestinal targeting. *Int. J. Pharm.* 1, 231, (1), 83-95.
- Cole, E.T., Scott, R.A., Cade, D., Connor, A.L., Wilding, I.R., 2004. *In-vitro* and *in-vivo* pharmacoscintigraphic evaluation of ibuprofen hypromellose and gelatin capsules. *Pharm Res.* 21, (5), 793-8.
- Cole E.T., Cadé, D., Benameur, H., 2008. Challenges and opportunities in the encapsulation of liquid and semi-solid formulations into capsules for oral administration. *Adv. Drug Deliv. Rev.* 17; 60, (6), 747-56.
- Colton, A. (1931). Capsule machine U.S. Patent 1 787 777 and British Patent 360 427.
- Deepthi, Y., Murthy, T.E., 2015. Design and development and evaluation of candesartan cilexetil liquid filling formulations. *Int. J. Pharm. Investig.* 5, (2), 81-6.

These findings provide evidence that HGC and HPMC capsules containing IR formulations of water soluble, rapidly absorbed drugs perform similarly *in-vivo* in young, healthy, fasted subjects yielding essentially identical pharmacokinetic parameters. The bioequivalence according to the FDA Guidelines established for the Excedrin® Extra Strength caplets over-encapsulated in either HGC or HPMC capsules made by the thermo-gelation process confirmed that the pharmacokinetics for these two capsules is essentially identical for acetaminophen, acetylsalicylate, and caffeine. The 5 minutes longer lag time in the *in-vitro* dissolution observed for the HPMC capsule over-encapsulated dosage form relative to the HGC over-encapsulated dosage form did not lead to a significant difference in *in-vivo* pharmacokinetics.

- Digenis, G.A., Sandefer, E.P., Page, R.C., Doll, W.J., Gold, T.B., Darwazeh, N.B. 2000. Bioequivalence study of stressed and nonstressed hard gelatin capsules using amoxicillin as a drug marker and gamma scintigraphy to confirm time and GI location of *in-vivo* capsule rupture. *Pharm Res.* 17, (5), 572-82.
- Dressman, J. (1986). Comparison of Canine and Human Gastrointestinal Physiology. *Pharmaceutical Research*, 3(3), 123-131. FDA Drug approval package (1998). Excedrin® Migraine (Acetaminophen, Aspirin & Caffeine) Tablets, Caplets & Geltabs. [http://www.accessdata.fda.gov/drugsatfda\\_docs/nda/98/020802\\_s000\\_ExcedrinTOC.cfm](http://www.accessdata.fda.gov/drugsatfda_docs/nda/98/020802_s000_ExcedrinTOC.cfm).
- FDA Guidance for Industry Dissolution Testing of Immediate Release Solid Oral Dosage Forms <http://www.fda.gov/downloads/drugs/guidancecomplianceregulatoryinformation/guidances/ucm070237.pdf>.
- Garbacza, G. Cadé, D., Benameur, H, Weitschies, W., 2014. Bio-relevant dissolution testing of hard capsules prepared from different shell materials using the dynamic open flow through test apparatus. *European Journal of Pharmaceutical Sciences* 57, 264–272.
- Goadsby, P. J., Ferrari, M. D., Olesen, J., Stovner, L. J., Senard, J. M., Jackson, N. C., Poole, P. H. C. (2000) Eletriptan in acute migraine: A double-blind, placebo-controlled comparison to sumatriptan. *Neurology* 54(1): 156 – 163.
- Groshens, E., He, X., Cade, D. (2009) Hypromellose Hard Capsules – Reproducibility of the *In-Vitro* Dissolution Performance in USP SGF Media. Poster AAPS Annual Meeting 2009.
- He, X., Groshens, E., Remondiere, I., Cade, D. (2012) Hypromellose capsules dissolution. Poster AAPS Annual Meeting 2012.
- Honkanen, O., Laaksonen, P., Marvola, J., Eerikäinen, S., Tuominen, R., Marvola, M., 2002. Bioavailability and *in-vitro* oesophageal sticking tendency of hydroxypropyl methylcellulose capsule formulations and corresponding gelatin capsule formulations. *Eur. J. Pharm. Sci.* 15 (5):479-88.
- Honkanen, O., Seppä, H., Eerikäinen, S., Tuominen, R., Marvola, M. (2001) Bioavailability of ibuprofen from orally and rectally administered hydroxypropyl methyl cellulose capsules compared to corresponding gelatin capsules. *S.T.P. Pharm Sci* 11(2): 181 - 185.
- Jones, B.E., Basit, A.W., Tuleu C., 2012. The disintegration behaviour of capsules in fed subjects: A comparison of hypromellose (carrageenan) capsules and standard gelatin capsules. *International Journal of Pharmaceutics*, 424 (1–2), 40–43.
- Kilic, M., Jantratid, E., Cade, D., Benameur, H., Dressman, J.B. (2009) *In-vitro* dissolution performance of a new hypromellose capsules – Vcaps Plus® in biorelevant media. Poster AAPS Annual Meeting 2009.
- Ku, M.S, Li, W., Dulin, W., Donahue, F., Cade, D., Benameur, H., Hutchison, K. 2010.
- Performance qualification of a new hypromellose capsule: part I. Comparative evaluation of physical, mechanical and processability quality attributes of Vcaps Plus®, Quali-V and gelatin capsules. *Int. J. Pharm.* 15, 386, (1-2), 30-41.
- Ku, MS, Lu, Q., Li, W., Chen, Y. (2011) Performance qualification of a new hypromellose capsule: Part II. Disintegration and dissolution comparison between two types of hypromellose capsules. *Int J Pharm* 416: 16 - 24.
- Liebowitz, S.M., Vadino, W.A., Ambrosio, T.J., 1990. Determination of hard gelatin capsule brittleness using a motorized compression test stand. *Drug Dev. Ind. Pharm.* 16, 995–1010.
- Lickliter, J. Noble, R., Smith D., Russ, S., Morris, S., Cooper, M. 2014. Pharmacokinetics and food effect of formulations of afuresertib. *Clinical Pharmacology in Drug Development*. 3, (S1), 8 1-14-1971589.
- Ogura, T., Furuya, Y., Matuura, S., 1998. HPMC capsules: an alternative to gelatin. *Pharm. Tech. Europe.* 10 (11), 32-42. Oullet, D, et al., Effects of Particle Size, Food, and Capsule Shell Composition on the Oral Bioavailability of Dabrafenib, a BRAF inhibitor, in Patients with BRAF Mutation-Positive Tumors, *J. Pharm Sci.* 102(9) 2013.
- Sikes, C., Alderman, J., Emir, B., Wilding, I. (2003) Encapsulation of sumatriptan tablets does not alter their bioavailability or dissolution characteristics. *Headache* 43: 581 – 582.
- Stegemann, S., Klebovich, I., Antal, I., Blume, H.H., Magyar, K., Németh, G., Paál, T.L., Stumptner, W., Thaler, G., Van de Putte, A., Shah, V.P. 2011. Improved therapeutic entities derived from known generics as an unexplored source of innovative drug products. *Eur. J. Pharm. Sci.* 20, 44, (4), 447-54.
- USP 29 <Acetaminophen, Aspirin and Caffeine Tablets>.
- Vardakou, M., Mercuri, A., Naylor, T.A., Rizzo, D., Butler, J.M., Connolly, P.C., Wickham, K.S.J., Faulks, R.M. (2011) Predicting the human *in-vivo* performance of different oral capsule shell types using a novel *in-vitro* dynamic gastric model. *Int J Pharm* 419: 192-199.
- Wilding, I.R., Clark, D., Wray, H., Alderman, J., Muirhead, N., Sikes, C.R. 2005. *In-vivo* disintegration profiles of encapsulated and nonencapsulated sumatriptan: gamma scintigraphy in healthy volunteers. *J Clin. Pharmacol.* 45, (1), 101-5.

For more information call us at 888-783-6361.

[capsugel.com](http://capsugel.com)

Follow us on:



All product information corresponds to Lonza's knowledge on the subject at the date of publication, but Lonza makes no warranty as to its accuracy or completeness and Lonza assumes no obligation to update it. All trademarks belong to Lonza and its affiliates. © 2019 Lonza. GMCN 201903002