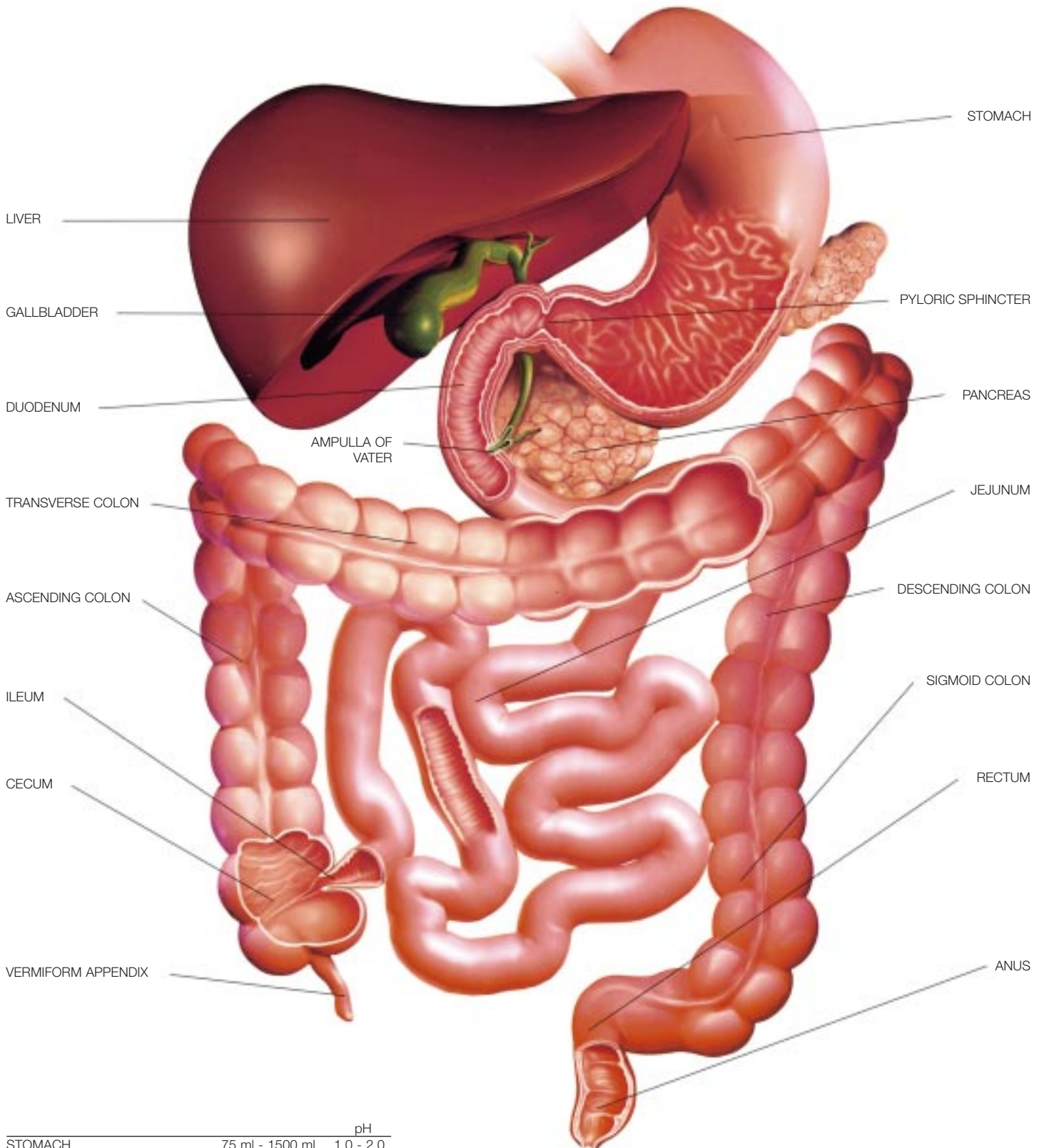




# the digestive system



			pH
STOMACH	75 ml - 1500 ml		1.0 - 2.0
SMALL INTESTINE	7.25 m	462 m <sup>2</sup>	
• DUODENUM	0.25 m	1.9 m <sup>2</sup>	4.0 - 5.5
• JEJUNUM	2.80 m	184 m <sup>2</sup>	5.5 - 7.0
• ILEUM	4.20 m	276 m <sup>2</sup>	7.0
LARGE INTESTINE	1.50 m		7.2 - 8.4
• CECUM	0.065 m		

With the compliments of

**Capsugel Library**

BAS 154b E 1997